

Stoiber + Associates - Cesar Chavez Prep Gym



Rendering of Proposed Work (SketchUp/Photoshop)

Location: Washington, DC
Use: Middle School Gymnasium
Concept: Practical
Year: 2013

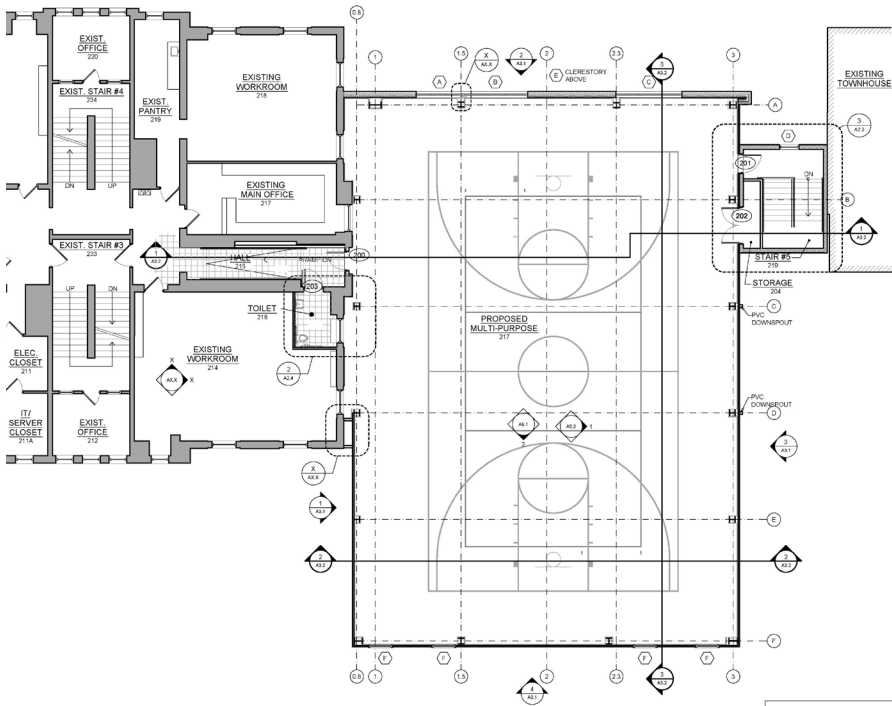
Architecture Office:
 Stoiber and Associates

Roles on Project:
 Work Through All Documentation
 Administer Bidding Process
 Assist in Obtaining a Permit

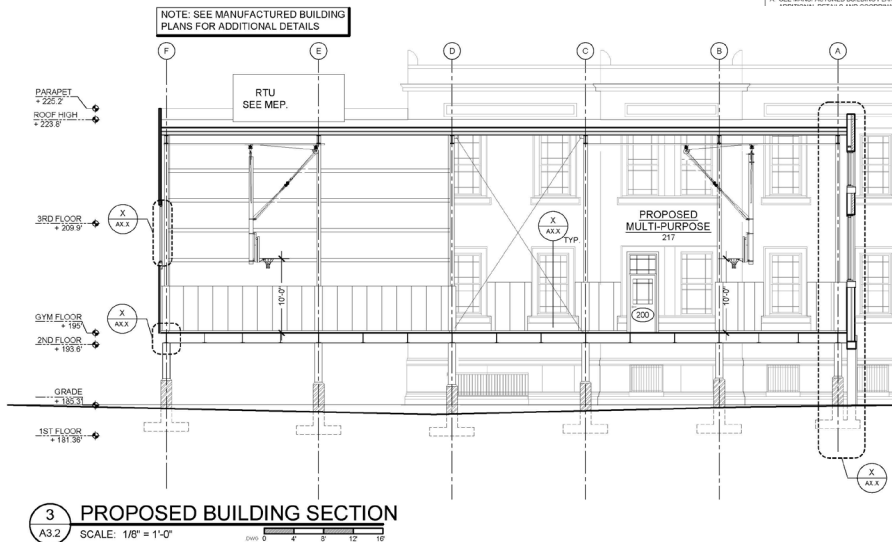
Write Up:
 A public middle school approached us to design a gymnasium addition. The school had a major renovation in 2005 that included the feasibility of a future gymnasium. Outside the typical height and setback restrictions, zoning required us to keep the existing parking capacity.

After studying the options, the most feasible solution included locating the gymnasium above the existing parking lot. With some restriping and coordinated column locations we maintained the existing parking capacity and allowed a direct connection to the second story of the existing building.

A feature of the new gymnasium includes the former exterior wall of the existing building becoming the interior wall of the gym.



GENERAL NOTES:
 A. SEE MANUFACTURED BUILDING PLANS FOR



Matthew Hagen served as an Architectural Designer at Stoiber + Associates for this Project. This work reflects items Matthew Hagen had a large part in the development of, but not entirely or exclusively.

Matthew C Hagen Professional Work Sample
 matt@matthagen.org | hagenstudio.org

